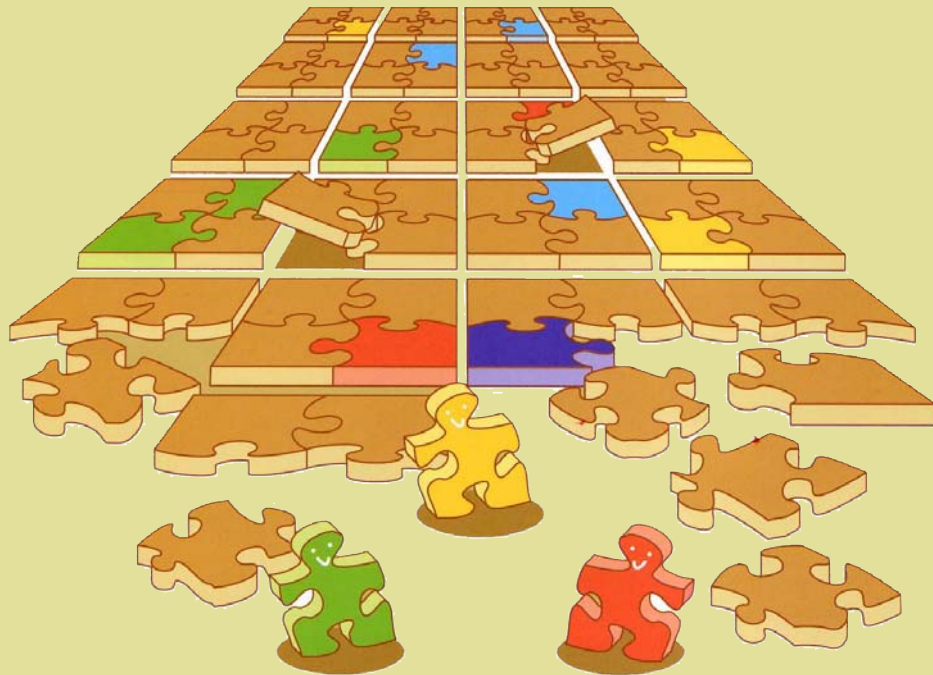


Kyoto Center For Community Collaboration





Future-oriented community development being promoted in partnership with all the people concerned

Layout of Each Floor

Exhibits reproducing the street corners in Kyoto

Exhibition corner allowing visitors to gain a better understanding of the history and current conditions of Kyoto. The landscape models reproducing the street corners, as well as the touch panel audiovisual system, allow the visitors to enjoy learning the development of communities in Kyoto.

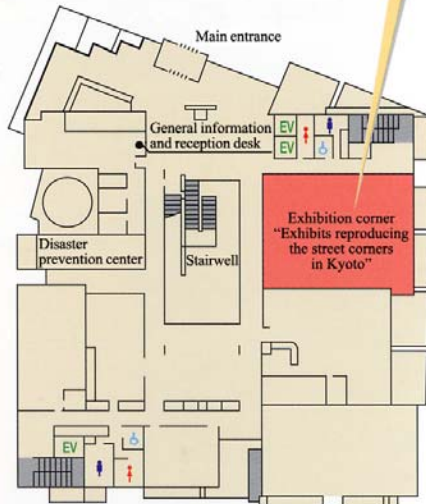


Exhibits reproducing the street corners in Kyoto



Place for exchange activities for community development

1st floor: Exhibits reproducing the street corners in Kyoto



Exhibits reproducing the street corners in Kyoto



Library

Consulting room

Two consulting rooms with a high degree of privacy are available.

Community development studio

A printing machine, photocopier, and bookbinding machine are available for publishing community information papers/magazines

Place for exchange activities for community development

A space that can be used for various activities, meetings, etc. by the people being involved in community development activities

1st basement: Kyoto Center for Community Development



Library

Academic, technical, and practical books on community development, grass-roots activities, social welfare, etc. are available. People can read the books in the library and borrow them.



Workshop room

Workshop room

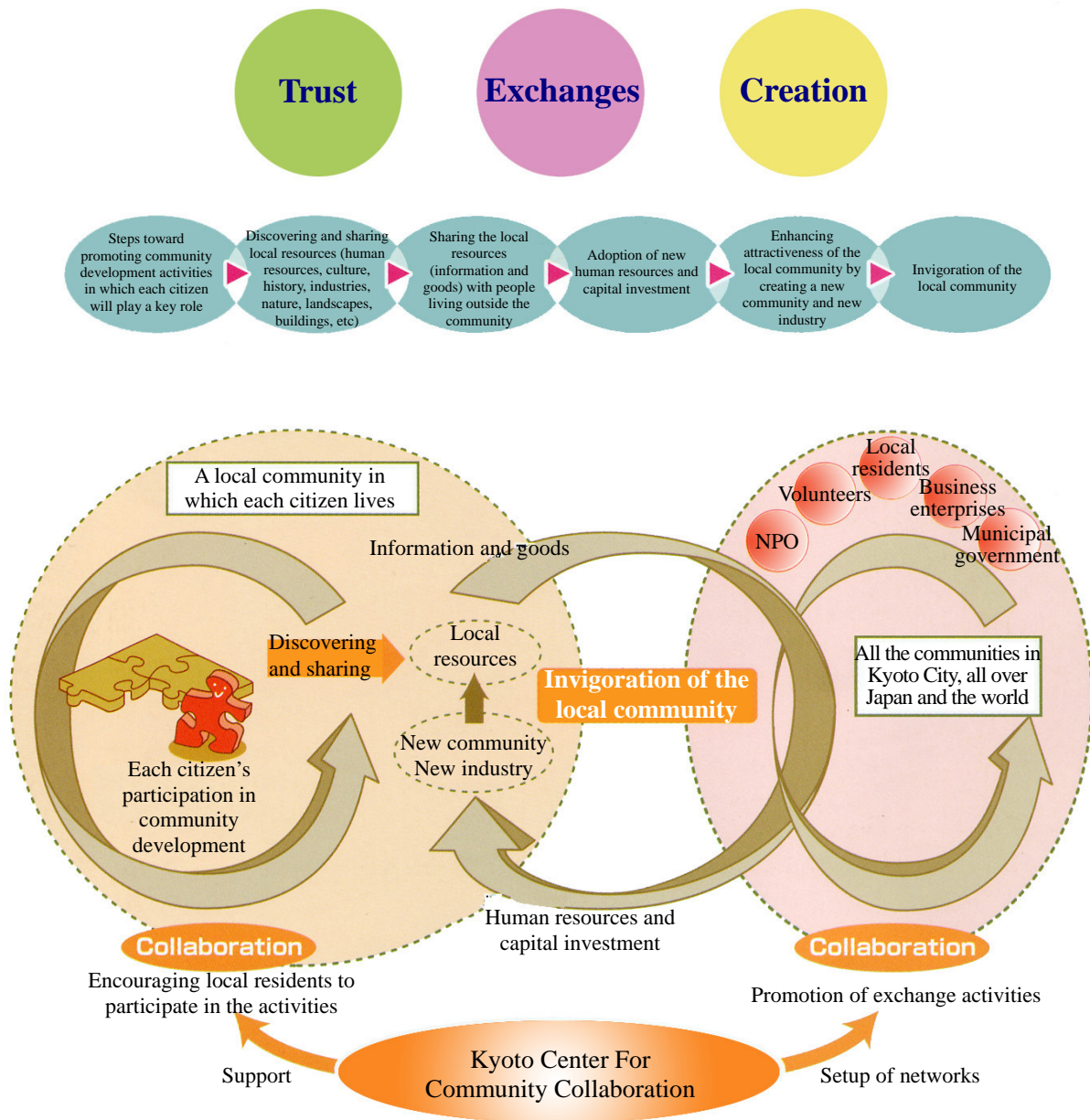
Workshops, regular seminars, symposiums are held here.

The first step toward creating a vibrant community

– You can also play a key role in community development activities –

We support “Community development activities in which citizens will take the initiative.”

A vibrant community based on trusting relationships will be created by each citizen’s active participation in the community development activities and various exchange activities.



Sending information about attractiveness of each local community toward outside, while promoting community development activities, makes it possible to invigorate the local community, which in turn will further enhance the attractiveness of the whole of Kyoto.

Community Collaboration University

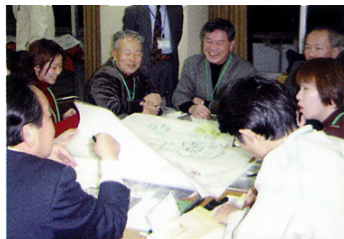
Various seminars are held to support grass-roots activities for future-oriented community development in Kyoto. These seminars provide a place for participants to learn community development with the focus on familiar examples, have discussions, and enjoy various exchange activities.



Promotion of local community development activities

Development of a local community in which each citizen lives

Local community development will start when each local resident becomes interested in the community in which he/she lives. Discovering local resources and assets, and sharing them with a great number of people will make it possible to create a new community with distinctive and unique characteristics.



Support for setting up a database of local resident-initiated community development

“Machidukuri Data Base System (MDBS),” which facilitates recording of information about the local community development, is made available.

Support for community development activities

(by dispatching experts and giving subsidies)

Experts on community development will be dispatched as an advisor for local resident-initiated community development activities. Organizations (or associations) pushing ahead with local community development activities continuously and systematically are eligible for subsidies to cover part of their costs.



Sending information, giving consultations, etc.

Consultations on any problem with community development and Kyo-machiya (traditional townhouses of the merchants in Kyoto)

Information, consultation, and advice about local community development, construction of condominiums, dead-end streets, Kyo-machiya, etc. are provided by the staff members working at the center and experts.

Newsletter A variety of information relating to local community development as well as people participating in the community development activities is provided through newsletters.

Symposium Symposiums are held in order for persons of learning and experience, experts, and citizens to exchange views and ideas regarding landscape and community development.

Homepage The latest information on community development activities, including the schedule of various events, is provided through the homepage set up by the center.



Promotion of proper utilization of land in symbiosis with the surrounding environment

Kyo-machiya Network

Kyo-machiyas are precious local resources, which have been handed down from generation to generation. In order to appropriately preserve and repair Kyo-machiyas, setup of the network is being promoted. Kyo-machiya network makes it possible for all the parties concerned, including citizens, owners and residents of Kyo-machiya, experts, business enterprises, and grassroots activities groups, to make more active efforts while working in collaboration with each other. This network is also expected to help alleviate worries and anxieties of owners and residents of Kyo-machiya.

Network for proper utilization of land in symbiosis with the surrounding environment

In order to create an attractive community with distinctive and unique characteristics, it is necessary to properly utilize land as well as inheriting and developing the traditional industries, community and space. Business enterprises intending to construct condominiums, etc are now setting up the network, in collaboration with local residents, to investigate the feasibility of proper utilization of land in symbiosis with the surrounding environment.

Survey and research

The center has been commissioned to make various surveys and researches so that business enterprises and administrative agencies will take new measures appropriate to the community development in Kyoto.

Profile of Kyoto Center For Community Collaboration (Incorporated foundation)

Outline

Name:	Kyoto Center For Community Collaboration (Incorporated foundation)
Date of establishment:	October 1, 1997
Basic property of the foundation:	60 million yen (funded by the Kyoto Municipal Government)

Context of operations

The Center is to carry out the following operations relating to landscape and community development.

- ① Raising public awareness and providing information
- ② Consultation
- ③ Self-learning and training
- ④ Giving support to various activities
- ⑤ Promotion of exchange activities
- ⑥ Research and development
- ⑦ Management and operation of the facilities in the Kyoto Center for Community Collaboration

History

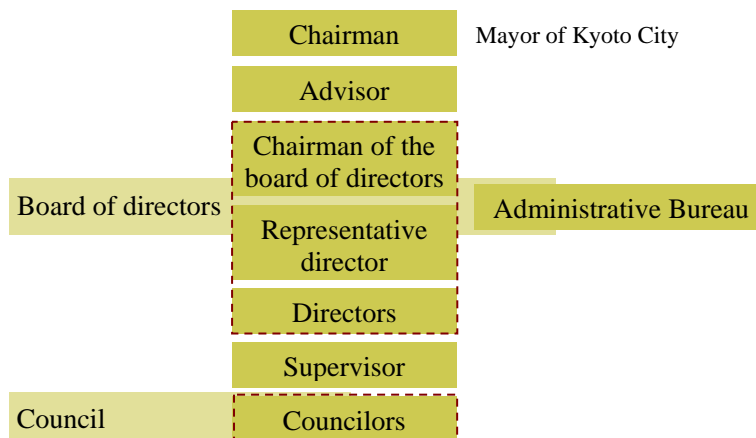
November in 1991: A suggestion for establishment of the Center was presented in “the first report made by Kyoto City Community Development Council.”

December in 1994: A suggestion for establishment of the Center was presented in “the second proposal based on the Universal Declaration of the City of Culture and Freedom.”

October in 1997: The incorporated foundation was established (Basic property of the foundation: 50 million yen). The foundation began operations after its administrative office was set up in the building that used to be used as Kyoto Municipal Tatsuike Elementary School.

May in 2000: The basic property was increased by 10 million yen.

Organization



We need your help and cooperation!

Supporting members

We would like you to become a supporting member who supports the activities of the Center promoting community development in partnership between local residents, business enterprises, and administrative agencies in order to preserve the landscapes of Kyoto and to enhance the city's attractiveness. The annual membership fees are to be used for the Center-initiated activities, etc.

■ Privileges of membership:

Delivery of newsletters

Introduction of various activities by newsletters.

Preferential invitation to symposiums, seminars, etc.

■ Annual fee for membership

(for the period starting on April 1 and ending on March 31 next year)

Individuals: 5,000 yen

Groups: 50,000 yen

■ Bank account numbers:

Savings account 1177867 at the head office of Kyoto Chuo Shinkin Bank

Savings account 1166668 at the Kyoto branch of UFJ Bank

* There is no charge for transfer if you transfer your membership fee into either of the account shown above from the head office or either of branches of Kyoto Chuo Shinkin Bank or UFJ Bank. (Please use the specified money transfer form distributed at the Center.)

* You can become a supporting member at any time.

Community Development Companions

You can also sign up as a staff member (volunteer) who helps carry out operations of the Center and conduct various events and activities for raising public awareness as well as for providing information about local community development. Anyone other than high school students who is interested in community development is eligible to sign up as a community development companion. Please sign up by filling out the specified application form distributed at the Center.



Kyoto Center for Community Collaboration is widely known by the nickname of "Kyo-machi Kobo (Kyoto community development studio)" and the logotype shown to the left.

[Origins of the nickname and logotype]

At the time of establishment of the Center, the nickname was chosen from among 987 entries and the logotype was chosen from among 171 entries. As for the nickname of "Kyo-machi Kobo," the image of community development being promoted with the cooperation of every local resident in Kyoto is likened to "studio." The logotype, expressed by a Chinese character "京" placed in a palm of a hand, conjures up the image of community development being promoted by the friendly cooperation between citizens and government.

Kyoto Center for Community Collaboration

Hito Machi Community Center B1F

83-1 Umeminato-cho, Kaminokuchi-agaru, Nishikiyamachi-dori Shimogyo-ku,

Kyoto, JAPAN 600-8127

Phone: 075-354-8701 Fax: 075-354-8704

Website: <http://machi.hitomachi-kyoto.jp>

The center provides information and support regarding community development issues. Please visit the above website.